

Sci 1620.537

Harvard University



LIBRARY OF THE

DIVISION OF
ENGINEERING

NOV 20 1911

SCIENCE CENTER LIBRARY

HARVARD COLLEGE
LIBRARY

MUNICIPAL ENGINEERING

INDEX

January—June, 1911.

VOLUME XL

MUNICIPAL ENGINEERING COMPANY

INDIANAPOLIS, IND.

NEW YORK, N. Y.

one like sulphureted hydrogen, from rising as high in the atmosphere as ordinarily is the case. Furthermore, the dispersion of the decomposition gases in the atmosphere is much less rapid than usual and this perhaps prevents aerial oxidation at normal speed. Associated with this are no doubt a variety of other factors about which information is quite meager at present. It is perhaps worth mentioning that some of the malodorous products may not be present in a chemical state such as to promote oxidation. They may be combined with other compounds which retard the reaction with the oxygen of the air.

Before dismissing this subject it will perhaps be well to speak briefly of the fact that at some disposal plants

there are characteristic odors other than of putrefaction. These odors are sometimes spoken of as being similar to laundry odors or odors resembling a raw turnip. The odor of cooking of certain vegetables is, of course, a conspicuous one under some circumstances. It is mentioned here to accentuate the thought that there are a good many decomposition products which have an individuality which is not specifically offensive, although it is noticeable and objected to by some. At the same time, such products suggest that hydrogen sulphide is not the whole story, and that it is important to study other compounds in connection with the question of objectionable odors.

The Parks and Boulevards of Oklahoma City.

By S. T. Bisbee, Oklahoma City, Oklahoma.

TEN years ago Everett I. Leach, alderman of the Fifth Ward of Oklahoma City, stood on the floor of the council chamber and begged the city council to appropriate fifty dollars to improve a one-acre park that had been donated to the city. The council absolutely refused to appropriate one penny. Seven days later the same Leach pleaded with the council, for sanitary reasons, to allot the sum of twenty-five dollars to remove the rubbish, tin cans, filth and debris from the one-acre tract. The council begrudgingly granted the request for this pitiful sum, and for sanitary reasons the one-acre tract was cleared, grass was planted by the neighbors, and the magnificent park system of Oklahoma City was born.

Today, ten years from the date when the intrepid Leach fought for the interests of the public, the park system of Oklahoma City embraces an uncompleted group of parks connected by a twenty-eight-mile boulevard which encircles the city. The ground that the boulevard occupies is now worth probably \$1,000,000. At intervals on that great speedway parks are located which represent at this time a land value of \$910,000 for the 1,700 acres contained therein. In addition to the land actually in use and being platted for parks, the park board controls (the title being held by Oklahoma City) 770 acres which can be sold at the present time for \$500,000. However,

this land is not for sale. The park board bought the land adjoining the parks, as the park property was acquired, simply as an investment, that town lots might be sold for many years to come, the revenue to be used to improve the parks which comprise the system.

Planning with the idea that Oklahoma City would have a population of 200,000 in 1920, the members of the present board, Will H. Clark, Whit M. Grant, and Paul M. Pope, built on broad lines. Opposed at times for extravagance, the commissioners did what they believed was best. When they bought land for the park system they also bought adjoining farms, knowing that the creation of the parks would enhance the value of the abutting property, and they wanted the park system to get the profits.

No one man has put Oklahoma City on the map as the "Park City;" no one man can receive all the credit for looking ahead. Yet there does rise before the gaze of the people of Oklahoma City a figure, unique, original and peculiar, a figure that has been passive in public affairs in Oklahoma City for many years, and never reached full development until parks came to mean to him "recreation for the people." This man was Will H. Clark.

Leading the simple life, Mr. Clark acquired wealth in a quiet way, and while not a rich man, has been able to retire from active life, only to re-enter

the arena as the champion of the park system. For years he was of such a retiring disposition that in a rapidly growing city only the old timers knew him. New comers were too busy to pay much attention to men who were not busy making money and busy making themselves heard.

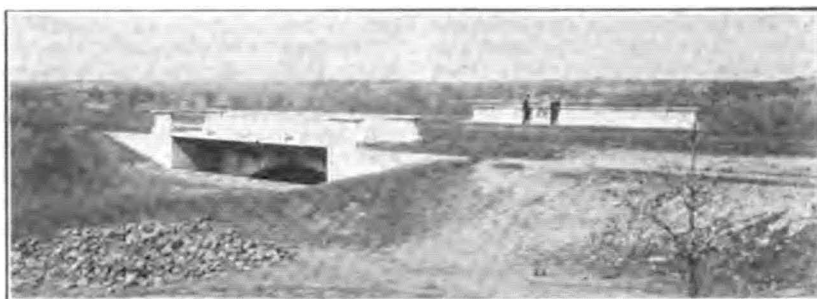
A lover of nature, Mr. Clark was offered the position of park commissioner in 1907 by a personal friend who happened to be mayor and who knew that Clark knew more about flowers and trees than the rest of the town put together.

William H. Clark woke up, Oklahoma City woke up, the great park system commenced to assume form, and to this Clark more than to any other one person is Oklahoma City, "Queen City of the Last Frontier," in-

Since that date other citizens have, from time to time, donated tracts to the city for park purposes, but the real development, the carefully planned, wisely outlined methods date from December, 1908, little more than two years ago.

Park Commissioner Clark tramped over many miles of rough country to familiarize himself with the physical conditions and the park and boulevard possibilities. He had hunted wild birds and wild animals over the same ground when the suburbs of Oklahoma City were a wilderness, but this time his trips were for business, that posterity might have wide areas in which to spend their pleasure hours.

Then the active Clark, not the timid Clark of the early days, went before the city council with his plans, urged,



OKLAHOMA CITY PARK.

Showing Character of Park Area, Road, Bridge, Dam and Lake Bed not yet Filled.

debted for that splendid avenue which girdles the metropolis of the State, dotted at irregular intervals with groves of giant oaks and stately elms, graced with flower gardens which are the pride of the State, and offering to the children of the former frontier town a place to play all day in the sun or in the shade.

The history of the building of this park system has been widely different from those of other American cities. Oklahoma City is not yet twenty-one years of age, yet it has a population of 70,000, and of this number 60,000 has become permanent within ten years.

In the early days of Oklahoma City Daniel F. Stiles, a captain of the U. S. Army, who was in charge of a company of infantry at this point, acquired a tract of land adjoining the city limits. He deeded to the city an acre for a children's playground, which is the tract mentioned in the first paragraph.

requested, demanded that an election be called to authorize the issue of \$400,000 of bonds for park purposes. The aldermen held their breath. People stood aghast. What! Spend that enormous sum of money for dirt and rocks and trees when that much money would build giant skyscrapers?

It did look like a wild scheme. But the election was held, a spirited campaign took place, and the bonds were voted.

Options had previously been secured on the land which was desired, and the work began.

The largest park is the Northeast Park, comprising 741 acres; the next largest is Trosper Park, 620 acres in extent. Not all of the land in these two parks will be used for park purposes, for about one-half of each will be held and sold for residence lots. That is what it was bought for, and the gain in value of the excess land is such that it can be sold at the present time for more than enough to extin-

guish the total bond issue of \$400,000, presenting the unusual municipal condition of a city owning a system of parks worth more than \$1,000,000 without a penny of investment, but the result of a few small donations of land and the far-seeing ability of a wise board of park commissioners.

The southern sun and the balmy air of the Southland are here, and the parks of Oklahoma City are glorious in their mantle of green. Yet these parks are not all in a finished state. Two years will not build a park system. Some of the smaller parks are completed, have grass, flowerbeds, electric lights and cement walks, with entrances of great architectural beauty. But the larger ones are in process of formation. Men and teams are at work constantly, the summer season in this section is long, and work can progress during ten months of the year. The man who has furnished the technical knowledge, the landscape skill is R. E. Brownell, for many years connected with the park system of Chicago. His work is a monument to him and is just beginning to be appreciated by a people that love the out-of-doors.

The excess lands in possession of the

city will be held for some years. The members of the park board are gratified at the demand that exists for such land. Rich men are eager to purchase building tracts in the vicinity of the parks that they may build great mansions fronting on the twenty-eight mile boulevard. The land would bring more than enough to pay the bonded park debt. Yet the park commissioners turn deaf ears to the entreaties of the would-be purchasers. The homes of rich men are desired along the boulevard, but not now. The park board is determined that men with money shall pay more and still more. The land will be worth it. As the parks and the boulevards take on their finishing touches the demand for the abutting acre tracts cannot but be keener. It is the most beautiful collection of building sites of the capital of the State, but is not on the market yet.

The park commissioners are stubborn. Eighty per cent. of the people of this city approve of the stubbornness, for it means that Oklahoma City will have a park system without cost which will be worth millions to the next generation.

A European Abattoir*

By S. M. Dodington, London, Eng.

LET us imagine ourselves in a large German city of 500,000 inhabitants. We alight at the main railway station and ask for the public slaughter house; we board the tram and are soon out in the suburbs, and see laid out before us a set of buildings surrounded by allotment gardens, and frequently by parks and open fields, though in some cases the abattoir is surrounded by residential property, it being an exploded idea that an abattoir must needs be isolated, for modern science and hygiene have made such progress that a modern abattoir is no more a nuisance than an ordinary lavatory. We alight at the main entrance gate, having on one side the director's residence and garden, and on the other side offices,

obtain a ticket of admission for a few pence.

Having purchased a ticket, we pass inside the grounds; the first thing noticeable is the amount of space and the handsome grass plots and trees between the buildings. The cattle market adjoins the abattoir, is invariably under cover, and is quite a different affair from the average cattle market in England. Whitewash is not generally seen, but glazed or smooth bricks are used. The writer has seen cattle markets in Germany which would take away the breath of the average Englishman; huge covered glazed brick halls fitted with marble slabbed pens, etc., glass offices occupied by officials taking charge of every detail of the organization; a